



1037 Silvermine Road
New Canaan, CT 06840-4398
(203) 966-9700 ext 26
www.silvermineart.org

Non-Profit
U.S. Postage
PAID
Permit #1196
Stamford, CT

SPECTRA 2010 CALL FOR ENTRIES



Todd Stewart

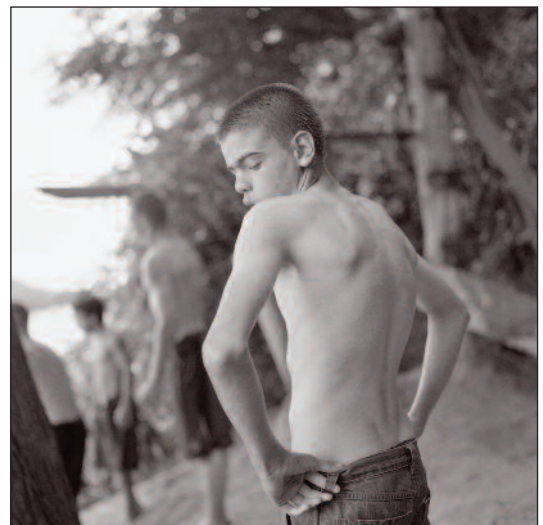
Silvermine Guild Arts Center
National Photography Triennial

SPECTRA 2010

November 14 – December 23, 2010

The Silvermine Galleries are recognized as one of New England's most respected showcases for established and emerging artists. Frequently changing exhibitions include one-person shows by Guild Artists, national and regional juried competitions, and curated shows including prominent artists such as Christo and Jeanne Claude, Faith Ringgold, Robert Gober, James Rosenquist, Kiki Smith, and Jasper Johns.

To learn more about the Silvermine Guild Arts Center, frequently asked questions, and tips on entering, please visit the SGAC website at www.silvermineart.org.



Kane Stewart



Joni Sternbach

Silvermine Guild Arts Center SPECTRA 2010

November 14 – December 23, 2010



Juror: Brian Paul Clamp, owner, ClampArt, Chelsea, NY

Brian Paul Clamp is the owner and director of ClampArt, a gallery in Chelsea in New York City specializing in modern and contemporary art with an emphasis on photography. ClampArt mounts ten to fifteen exhibitions per year featuring the work of emerging and mid-career artists. Mr. Clamp opened the gallery in 2000 after completing a Master of Arts degree in Critical Studies in Modern Art at Columbia University. For eight years prior to that Mr. Clamp served as the director of a gallery on Manhattan's Upper East Side specializing in late 19th- and early 20th-century American paintings. Aside from exhibitions at his own gallery space, Clamp has curated numerous photography shows at various venues throughout the United States, and has reviewed photographers' portfolios on dozens of panels over the past several years. Mr. Clamp is the author of numerous publications on American art to date, and also occasionally contributes written work to various art periodicals.

Juried Competition

Eligibility: All original photography, completed since January 2007, is eligible. Residents of the United States only. Maximum print size must not exceed 165 inches in length or width. CD-ROMs and DVDs will be accepted. No slides. Entry deadline is Tuesday, September 14, 2010. All entries received after that date will not be eligible.



Torrance York



2010 Calendar

Tuesday, September 14, 2010

Deadline for receipt of submissions (not postmark date)

Friday, October 1, 2010

Selection notification e-mailed and posted on website

Monday, November 8, 2010

Arrival deadline for shipped/hand-delivered selected works

Sunday, November 14, 2010

Opening Reception and Awards 2-4pm

Thursday, December 23, 2010

Last day of exhibition

Wednesday, December 29, 2010

Pick-up of hand-delivered work from gallery



Directions:

Entry Fee

A \$30 nonrefundable fee for up to three works must accompany the submission. \$10 for each additional submission. Please include a check made out to: Silvermine Guild Arts Center. The juror may include multiple images from one entrant, per his discretion.

Awards

The juror has funds available at his discretion to designate a number of works for awards including \$1,000 for Best in Show, plus additional awards.

Reproduction

Silvermine Guild shall assume the right to reproduce any selected work for publicity reasons.

Sales

All works must be for sale and the retail price must be included on the original entry form. A commission of 50% will be charged. Price of work may not be changed after it is submitted. Art substitutions are not allowed. An accepted entry may not be withdrawn prior to the close of the exhibition. All selected US artists will be asked to supply Social Security number in the event of sales or awards.

Submission Requirements:

CD-Rom Requirement:

Include one RGB image in jpg format for **each** entry at approximately 300 dpi. Longest dimension of jpg not to exceed 8".

Please label the file as follows:

Name.title.jpg

*It may be necessary to shorten the title to keep within the 30-character limit

CD's/entry forms will not be returned.

Shipment/Delivery of Selected Prints

Selection notification will be e-mailed and posted on the Silvermine Guild website on or around Friday, October 1, 2010. Work selected for exhibition in SPECTRA 2010 must arrive at Silvermine Guild Galleries no later than Sunday, November 7 and Monday, November 8, 2010. Prints should be hand delivered or sent in flat, reusable cardboard boxes. Work will be returned in its original packaging (no packing peanuts please). All return shipments will be sent via UPS 5-day ground track (note: UPS will not deliver to a P.O. box). Artists whose work is selected for exhibition will be notified to include a pre-paid return shipping receipt. Receipt must be received with shipped works in order for work to be exhibited.

Liability/Insurance

Silvermine Guild Arts Center will insure work while it is on exhibit to the extent of 50% of the artist's stated retail price. Insurance for artwork in transit is the responsibility of the individual artist. Hand-delivered work that is not picked up on Wednesday, December 29, 2010 is no longer insured and is left at the artist's own risk. Submission materials shall become the property of Silvermine Guild and will not be returned. Your entry implies agreement to the above conditions.

**For more information call
203-966-9700 ext 26**

**E-mail us at
ericafabrizio@silvermineart.org
or see our website at
www.silvermineart.org**

Entry Form

The deadline for receipt is September 14, 2010

by Silvermine Guild Arts Center (not postmark date)

Last Name _____ First Name _____

Address _____

City/State/Zip _____

Telephone _____ Email _____

Entry	Title	Medium	Framed size (inches)	Retail price
A				
B				
C				

Your signature on the entry form and submission of an entry to SPECTRA 2010 signifies your grant of permission to Silvermine Guild Arts Center to reproduce work selected for the exhibition in promotional material, and your acceptance of all conditions stated in this prospectus.

Entry Checklist

- Entry fee of \$30 for up to 3 works. Silvermine Guild artists may submit one complimentary artwork.
- Checks should be payable to Silvermine Guild Arts Center.
- CD Rom or DVD: there is no maximum number of entries you may submit. Please try to save all files on one CD or DVD.
- Double-check your CD Rom and DVD to make sure it can be read.
- Make a copy of entry form for your records.
- Complete and sign entry form.
- Please do not send photographs, resumes, bios, artist's statements, etc. with your submissions.

Signature _____

How did you hear about SPECTRA?

SPECTRA 2010 Selection Notification

Entry	Title	Selected	Not selected
A			
B			
C			